

## Line Rider SKM 311 /0053 SA

Electronic Control Systems:Sensors:Line Runner

### Product description

Type	SKM 311 /0053 SA
Description	Line Rider for rope Ø 13 ... 16 mm (5/8")
Product description	SKM rope tensiometer (line rider) have been preferably designed for direct force measurements in the running hoist rope of a crane. Typical application is force measurement on lifting equipment i.e for safe load indicators of cranes, especially lattice boom cranes. SKM 311 are available for ropes from 6 mm up to 16 mm diameter. For rope diameters from 16 mm up to 32 mm diameter the SKM 312 type is available.
Construction type	Sensor with swing arm
Order No.	603656 - 48 311 06 0053

### Technical data

Operating voltage	10 ... 36 V DC
Current consumption	40 mA approx.
Measuring range	0 ... 125 kN
Signal output	4 ... 20 mA
Accuracy	3 % (measuring unit)
Electrical connection	Plug Cannon MS 3102 R16S-10P (3-pin.)
Mounting position	any
Weight approx.	7 kg approx. (without swing arm)

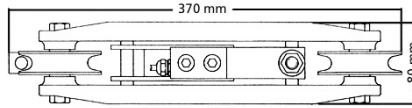
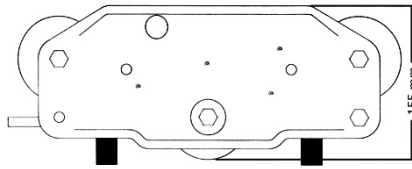
### Environmental conditions

Operating temperature	-25 ... +70°C
Storage temperature	-30 ... +75°C
Degree of protection (IP)	IP 65
Saltwater-proof	no

### Accessories

Options	514038 - Swing arm, cpl.
---------	--------------------------

### Drawing



Ausgangssignal bei Nulllast 4mA bezogen auf C  
output signal at zero load 4mA referred to C

Ausgangssignal bei Nennlast 20mA bezogen auf C  
output signal at nominal load 20mA referred to C

Verstärker-Steckdose: MS 3102 R16S-10P  
amplifier socket: MS 3102 R16S-10P

A	U=10...30VDC
B	Signal
C	Masse